

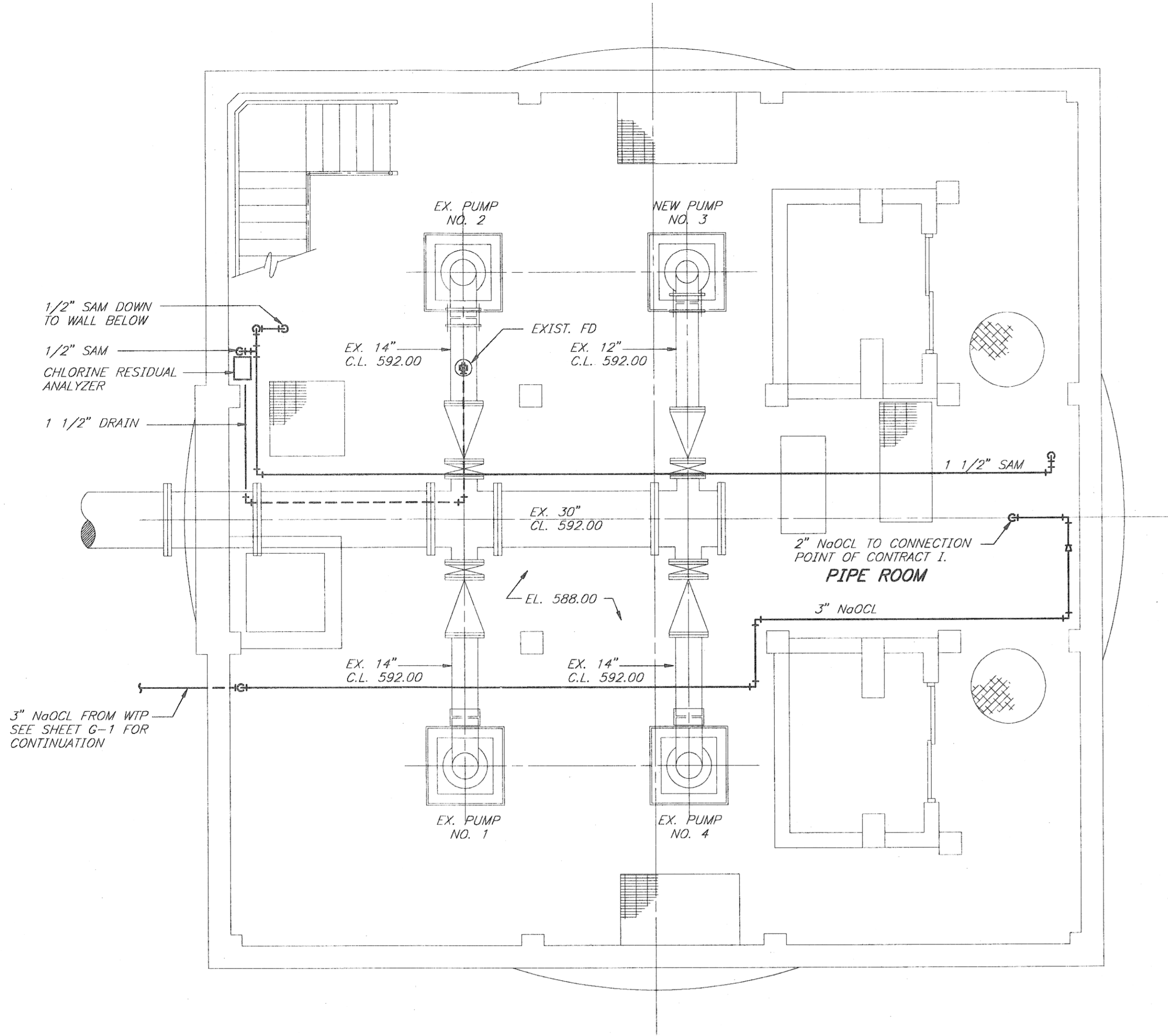
REV	DESCRIPTION	BY	DATE	CHK'D
△	ISSUED FOR REBID		1/9/95	
△				
△				
△				

GAS FIRED HVAC UNIT (NAT. GAS HTG, DX COOLING)														
MARK	LOCATION	SUPPLY FAN			HEATING SECTION			COOLING COIL			VOLTS	TRANE MODEL NO.	REMARKS	
		CFM	ESP	HP	MBH INPUT	MBH OUTPUT	BURNER MOTOR	TO FAN MOTOR	MBH TOTAL	MBH (SENS)	EAT			PHASE
HCAC-1	CHEMICAL STORAGE BUILDING	1100	1100	.5"	1/3	120	97	-	33.6	18.2	18.2	460 B9	YC0037	PROVIDE W/ECONOMIZER & REMOTE POTENTIOMETER

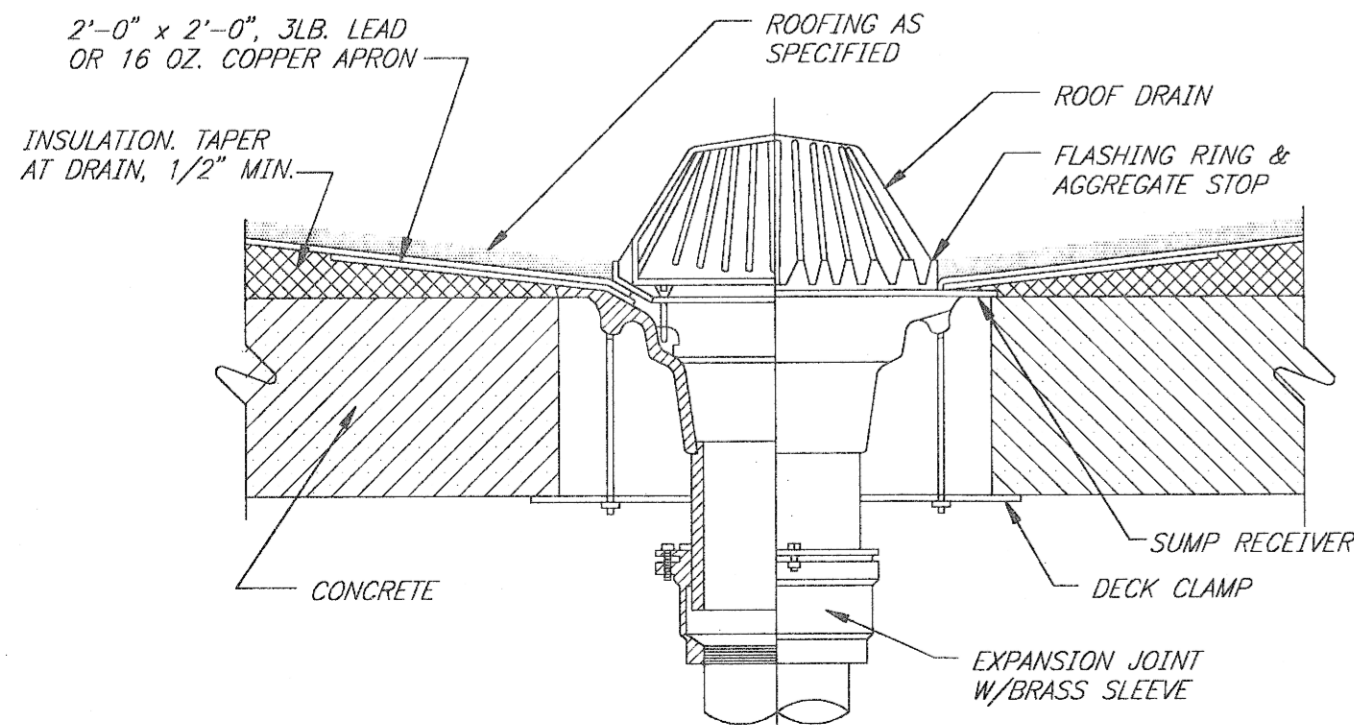
EXHAUST FANS									
MARK	LOCATION	CFM	SP	MOTOR HP	VOLTS		RPM	LOREN COOK MODEL NO.	REMARKS
					PHASE				
WF-1	CHEMICAL STORAGE BUILDING	1003	1/4	1/6	115	1	950	16S100	FURNISH ALL FANS WITH DISCONNECT SWITCHES INTERLOCK W/LIGHT SWITCH, CORROSION COATED

PLUMBING SCHEDULE							
MARK	QUANTITY	DESCRIPTION	CONNECTIONS	CAPACITY	ELECTRICAL	MODEL NO.	REMARKS
	1	EMERGENCY EYEWASH SHOWER COMBINATION	1 1/4"	30 GPM	-	HAWS B309 CRP	
	1	WATER METER	1 1/4"	0-50 GPM	-	HERSEY WMS0	
	1	TEMPERED WATER STORAGE TANK	2"	120 GAL	-	LOCHINVAR	
	1	PNEUMATIC SUMP PUMP	1"	20 GPM @ 30PSI	-	WILCOX M2R	FOR SODIUM HYPOCHLORITE (15%)
	3	ROTAMETERS	2"	0-30 GPM	-	WALLACE & TIERNAN	
	1	REDUCED PRESSURE BACKFLOW PREVENTER	2"	0-100 GPM	-	WATTS 909	PIPE DRAIN TO NEAREST BASEMENT FLOOR DRAIN

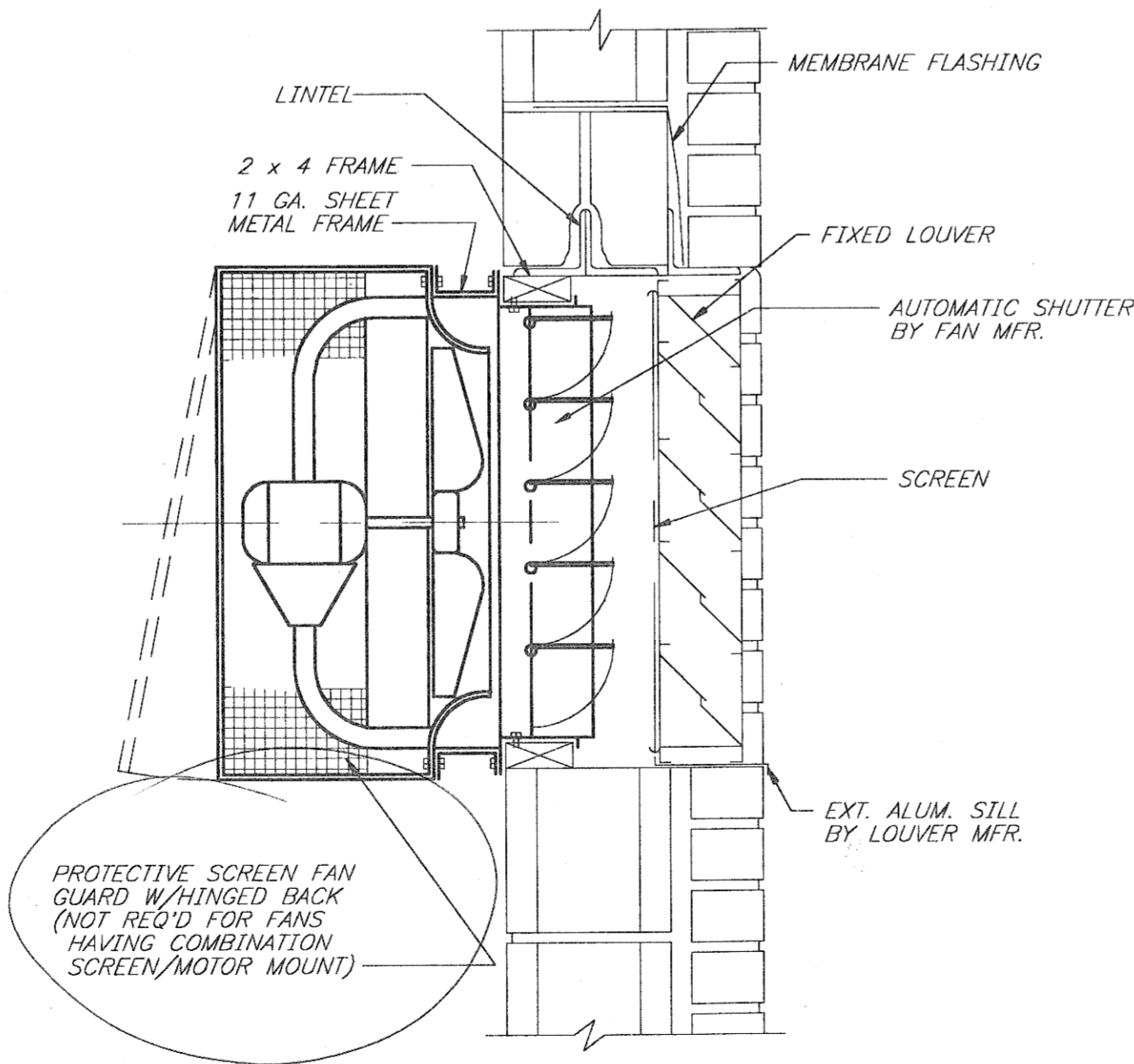
GAS FIRED UNIT HEATERS (GUH)										
MARK	LOCATION	CFM	INPUT MBH		HP	VOLTS		TRANE MODEL NO.	REMARKS	
				OUTPUT MBH	RPM		PHASE			
GUH-1	CHEMICAL STORAGE BUILDING	800	45.0	36.5	1/30	1/30	115	1	GPWD-004	PROVIDE UNIT MOUNTED THERMOSTAT



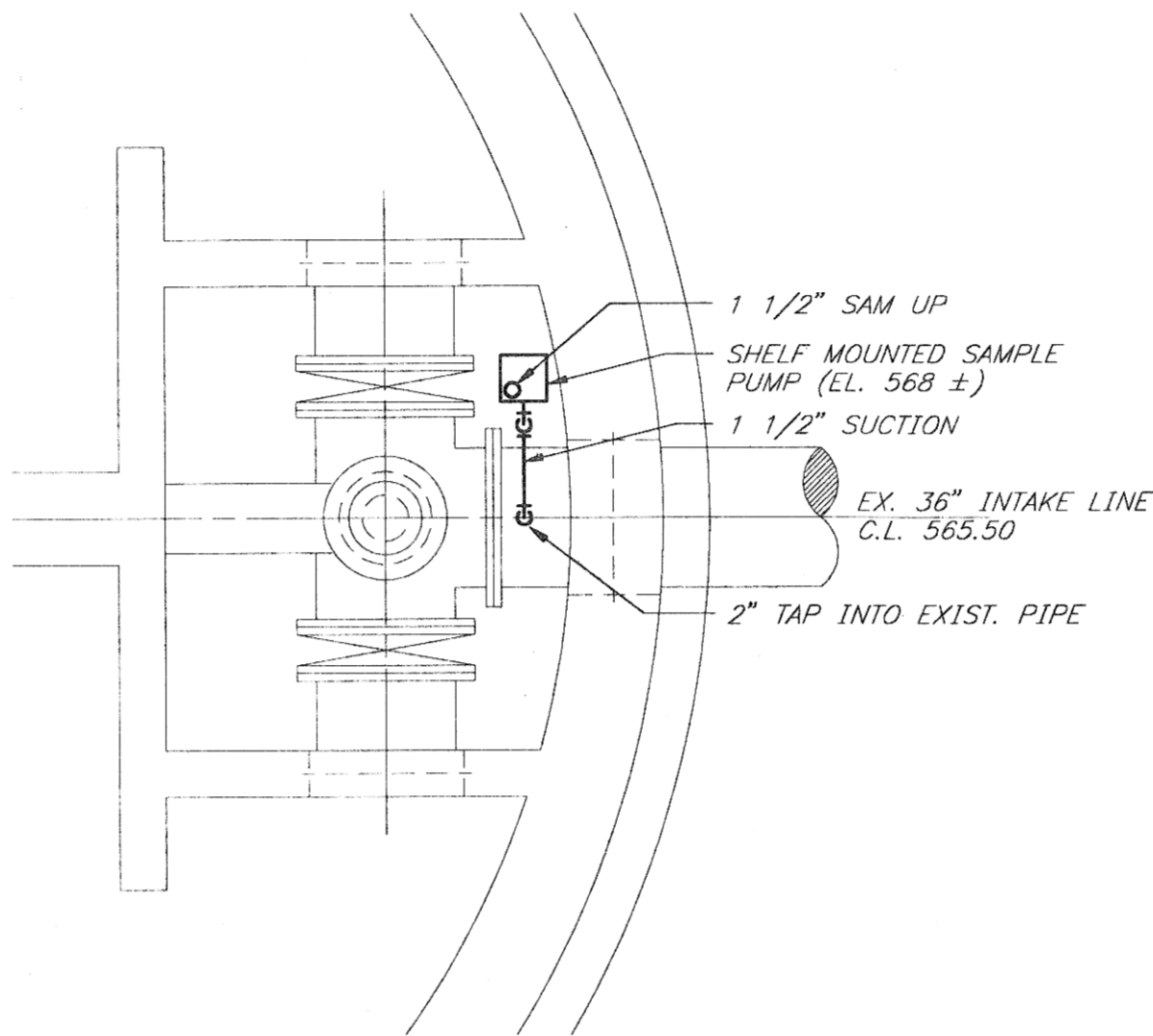
PIPE ROOM PLAN  
SCALE: 1/4" = 1'-0"



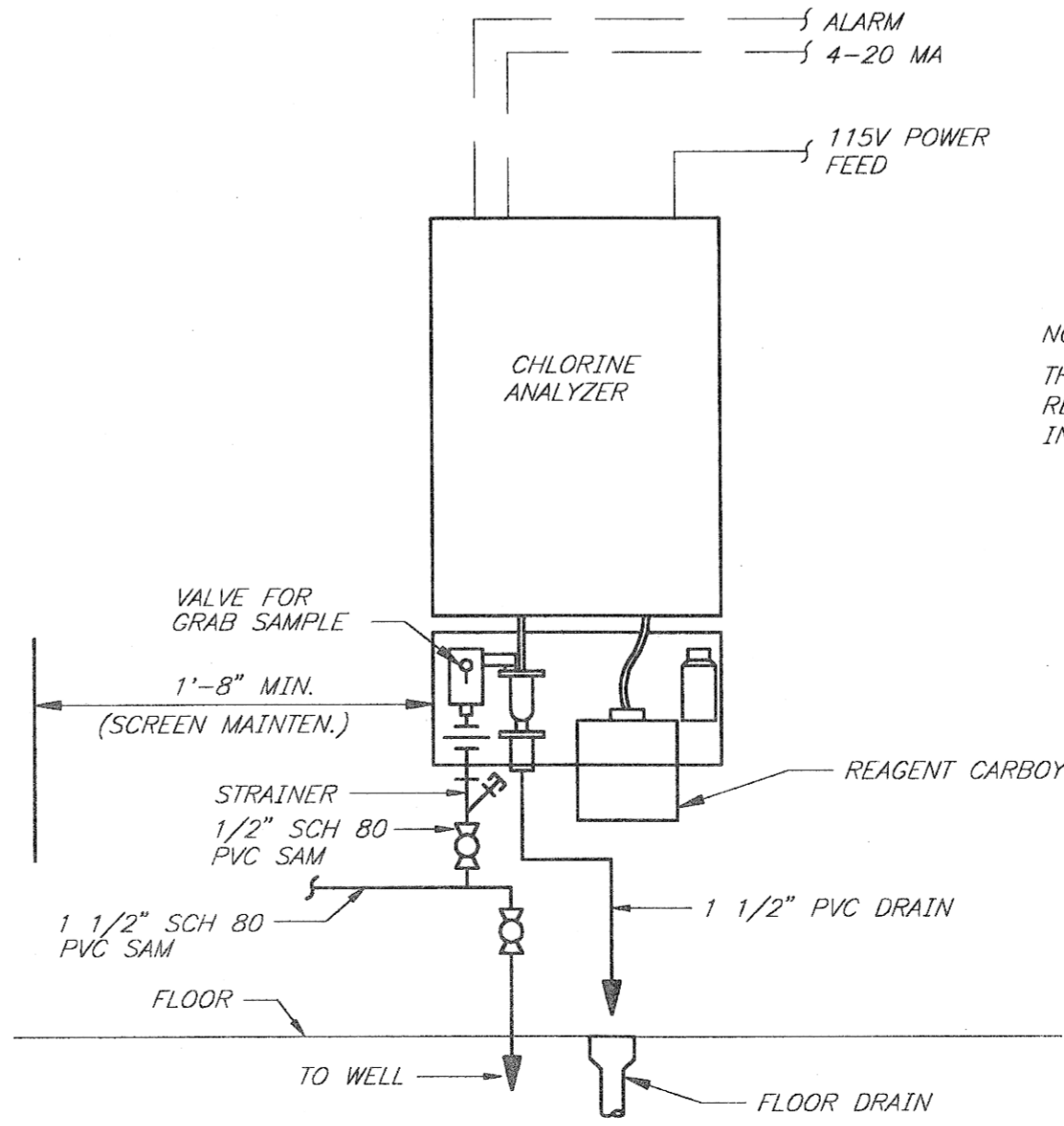
ROOF SUMP DETAIL  
PRECAST & CAST-IN-PLACE CONCRETE DECK





WALL EXHAUST FAN  
W/DAMPER & FIXED LOUVER  
(BRICK FACING)



PARTIAL WET WELL PLAN  
SCALE: 1/4" = 1'-0"



NOTE:  
THE CHLORINE ANALYZER DETAIL IS ONLY PROVIDED TO INDICATE THE PLUMBING REQUIREMENTS AT THE ANALYZER. ACTUAL INSTALLATION DETAILS WILL BE IDENTIFIED IN THE APPROVED SHOP DRAWINGS.

Ann Arbor, Michigan Detroit, Michigan Escanaba, Michigan Grand Rapids, Michigan Lansing, Michigan		 ENGINEERING EXCELLENCE SINCE 1904	
McNAMEE-PORTER & SEELYE, INC.			
DESIGNED E. SCHRADER		CHECKED W. ORINTAS	
SCALE AS NOTED		CADD DATE 01-05-95 JCT 4	
PART /PROJ/225.14.30/M/MS-C-DET AC			
CITY OF TRAVERS, MICHIGAN WATER TREATMENT PLANT IMPROVEMENTS SODIUM HYPOCHLORITE SYSTEM ADDITION			
MECHANICAL			
LOW SERVICE PUMP STATION PLAN MISC. DETAILS, SCHEDULES			
DIVISION	CONTRACT	SHEET	
	225.14-W-2(R)	M-3	
		OF 3	